

Ø 12-168,3 mm



SYSTEM **KAN-therm**

Inox

Noble material
Giga possibilities



TECHNOLOGY OF SUCCESS



ISO 9001

System KAN-therm Inox - assortment

stainless steel pipe - 1.4404 - bar 6 m

GROUP: H

Size	New code	*	Code	Packing	UM
12×1,0	1629 194065	**	6118046	6/624	m
15×1,0	1629 194001		611791.4	6/840	m
18×1,0	1629 194002		611792.5	6/450	m
22×1,2	1629 194003		611793.6	6/360	m
28×1,2	1629 194004		611794.7	6/300	m
35×1,5	1629 194005		611795.8	6/180	m
42×1,5	1629 194006		611796.9	6/150	m
54×1,5	1629 194007		611797.1	6/90	m
76,1×2	1629 194008		611798.0	6/168	m
88,9×2	1629 194009		611799.1	6/136	m
108×2	1629 194000		611800.2	6/108	m
139,7×2,0	1629 194035	**	6310100	6/108	m
168,3×2,0	1629 194036	**	6310101	6/84	m



press stainless steel pipe - 1.4521 - bar 6 m

GROUP: H

Size	New code	*	Code	Packing	UM
15×1,0	1629 194021		6221506	6/840	m
18×1,0	1629 194023		6221807	6/450	m
22×1,2	1629 194025		6222207	6/360	m
28×1,2	1629 194027		6222808	6/300	m
35×1,5	1629 194029		6223510	6/180	m
42×1,5	1629 194031		6224212	6/150	m
54×1,5	1629 194033		6225412	6/90	m



press male connector

GROUP: G

Size	New code	*	Code	Packing	UM
12×R $\frac{3}{8}$	1609 045042		6198918	10/200	pc
12×R $\frac{1}{2}$	1609 045041		6198929	10/200	pc
15×R $\frac{1}{2}$	1609 045004		6190580	10/200	pc
15×R $\frac{3}{4}$	1609 045005		6190591	10/80	pc
18×R $\frac{1}{2}$	1609 045006		6190602	10/160	pc
18×R $\frac{3}{4}$	1609 045007		6190613	10/100	pc
22×R $\frac{1}{2}$	1609 045009		6190635	10/70	pc
22×R $\frac{3}{4}$	1609 045010		6190646	10/100	pc
22×R1	1609 045008		6190624	10/60	pc
28×R $\frac{3}{4}$	1609 045013		6190679	10/50	pc
28×R1	1609 045012		6190657	10/60	pc
28×R1 $\frac{1}{4}$	1609 045011		6190668	10/30	pc
35×R1	1609 045015		6190681	10/40	pc
35×R1 $\frac{1}{4}$	1609 045016		6190701	5/40	pc
35×R1 $\frac{1}{2}$	1609 045014		6190690	10/20	pc
42×R1 $\frac{1}{4}$	1609 045018		6190723	4/12	pc
42×R1 $\frac{1}{2}$	1609 045017		6190712	4/24	pc
54×R1 $\frac{1}{2}$	1609 045019		6190734	4/16	pc
54×R2	1609 045020		6190745	4/12	pc
76,1×R2 $\frac{1}{2}$	1609 045002		620475.9	2	pc
88,9×R3	1609 045003		620476.1	2	pc



* on request (delivery time up to 4 weeks)

** availability by individual arrangements

*** till stock ends

press union connector

GROUP: G

Size	New code	*	Code	Packing	UM
15×R½	1609 272000		6192120	2/50	pc
15×R¾	1609 272011		6192131	2/60	pc
18×R½	1609 272012		6192142	2/60	pc
18×R¾	1609 272003		6192153	2/60	pc
22×R½	1609 272005		6192164	2/40	pc
22×R¾	1609 272013		6192175	2/40	pc
22×R1	1609 272004		6192186	2/30	pc
28×R1	1609 272014		6192197	2/30	pc
35×R1¼	1609 272015		6192208	2/16	pc
42×R1½	1609 272009		6192219	2/12	pc
54×R2	1609 272016		6192296	2/4	pc



press female connector

GROUP: G

Size	New code	*	Code	Packing	UM
12×Rp¾	1609 042026		6198931	10/130	pc
12×Rp½	1609 042025		6198940	10/130	pc
15×Rp½	1609 042000		6190415	10/130	pc
15×Rp¾	1609 042001		6190426	10/90	pc
18×Rp½	1609 042002		6190437	10/120	pc
18×Rp¾	1609 042003		6190448	10/80	pc
22×Rp½	1609 042005		6190461	10/100	pc
22×Rp¾	1609 042006		6190470	10/100	pc
22×Rp1	1609 042004		6190459	10/60	pc
28×Rp½	1609 042027		6193308	10/40	pc
28×Rp¾	1609 042009		6190503	10/40	pc
28×Rp1	1609 042007		6190481	10/60	pc
28×Rp1¼	1609 042008		6190492	10/30	pc
35×Rp1	1609 042012		6190514	10/20	pc
35×Rp1¼	1609 042011		6190536	10/30	pc
35×Rp1½	1609 042010		6190525	10/20	pc
42×Rp1¼	1609 042014		6190558	4/12	pc
42×Rp1½	1609 042013		6190547	4/24	pc
54×Rp1½	1609 042015		6190569	4/12	pc
54×Rp2	1609 042016		6190571	4/12	pc



press female union connector

GROUP: G

Size	New code	*	Code	Packing	UM
15×Rp½	1609 271000		6192021	2/60	pc
15×Rp¾	1609 271001		6192032	2/40	pc
18×Rp½	1609 271002		6192043	2/40	pc
18×Rp¾	1609 271003		6192054	2/40	pc
22×Rp¾	1609 271010		6192065	2/40	pc
22×Rp1	1609 271004		6192076	2/30	pc
28×Rp1	1609 271011		6192087	2/26	pc
35×Rp1¼	1609 271012		6192098	1/20	pc
42×Rp1½	1609 271013		6192109	2/8	pc
54×Rp2	1609 271009		6192111	2/4	pc



* on request (delivery time up to 4 weeks)

** availability by individual arrangements

*** till stock ends

press half union connector (with flat gasket)

GROUP: G

Size	New code	*	Code	Packing	UM
15×G¾"	1609 271014		6191735	10/120	pc
18×G¾"	1609 271015		6191746	10/100	pc
22×G1"	1609 271016		6191757	10/60	pc
28×G1¼"	1609 271017		6191768	10/40	pc
35×G1½"	1609 271018		6191779	4/32	pc
42×G1¾"	1609 271019		6191781	4/12	pc
54×G2½"	1609 271020		6191790	4/8	pc



press coupling

GROUP: G

Size	New code	*	Code	Packing	UM
12×12	1609 245002	**	6198874	10/140	pc
15×15	1609 245003		6190943	10/140	pc
18×18	1609 245004		6190954	10/140	pc
22×22	1609 245012		6190965	10/80	pc
28×28	1609 245013		6190976	10/60	pc
35×35	1609 245014		6190987	5/40	pc
42×42	1609 245015		6190998	4/24	pc
54×54	1609 245016		6191009	4/16	pc
76,1×76,1	1609 245010		620415.4	4	pc
88,9×88,9	1609 245011		620416.5	4	pc
108×108	1609 245000		620417.6	4	pc
139,7×139,7	1609 245017	**	6310001	1	pc
168,3×168,3	1609 245018	**	6310011	1	pc



press slip coupling

GROUP: G

Size	New code	*	Code	Packing	UM
15×15	1609 080001		6191284	10/140	pc
18×18	1609 080002		6191295	10/100	pc
22×22	1609 080003		6191306	10/60	pc
28×28	1609 080004		6191317	10/40	pc
35×35	1609 080005		6191328	5/20	pc
42×42	1609 080010		6191339	4/16	pc
54×54	1609 080007		6191341	2/8	pc
76,1×76,1	1609 080008		620428.6	2	pc
88,9×88,9	1609 080009		620429.7	2	pc
108×108	1609 080000		620430.8	2	pc



* on request (delivery time up to 4 weeks)

** availability by individual arrangements

*** till stock ends

press 90° elbow

GROUP: G

Size	New code	*	Code	Packing	UM
12×12	1609 068149	**	6198885	10/150	pc
15×15	1609 068150		6190206	10/150	pc
18×18	1609 068151		6190217	10/90	pc
22×22	1609 068152		6190228	10/60	pc
28×28	1609 068115		6190239	5/30	pc
35×35	1609 068153		6190241	5/20	pc
42×42	1609 068154		6190250	2/8	pc
54×54	1609 068155		6190261	2/8	pc
76,1×76,1	1609 068125		6230004	2	pc
88,9×88,9	1609 068128		6230015	2	pc
108×108	1609 068107		6230026	1	pc
139,7×139,7	1609 068156	**	6310002	1	pc
168,3×168,3	1609 068157	**	6310012	1	pc



press nipple 90° elbow

GROUP: G

Size	New code	*	Code	Packing	UM
12×12	1609 068142		6198896	10/120	pc
15×15	1609 068143		6190349	10/120	pc
18×18	1609 068144		6190351	10/60	pc
22×22	1609 068133		6190360	5/60	pc
28×28	1609 068145		6190371	5/30	pc
35×35	1609 068146		6190382	5/10	pc
42×42	1609 068147		6190393	2/8	pc
54×54	1609 068148		6190404	2/6	pc
76,1×76,1	1609 068139		6230037	1	pc
88,9×88,9	1609 068141		6230048	1	pc
108×108	1609 068130		6230059	1	pc



press 45° elbow

GROUP: G

Size	New code	*	Code	Packing	UM
15×15	1609 068079		6190041	10/150	pc
18×18	1609 068080		6190052	10/120	pc
22×22	1609 068051		6190063	10/70	pc
28×28	1609 068052		6190074	10/40	pc
35×35	1609 068081		6190085	5/25	pc
42×42	1609 068082		6190096	2/16	pc
54×54	1609 068083		6190107	2/8	pc
76,1×76,1	1609 068057		6230061	2	pc
88,9×88,9	1609 068059		6230070	2	pc
108×108	1609 068048		6230081	2	pc
139,7×139,7	1609 068084	**	6310003	1	pc
168,3×168,3	1609 068085	**	6310013	1	pc



* on request (delivery time up to 4 weeks)

** availability by individual arrangements

*** till stock ends

press nipple 45° elbow

GROUP: G

Size	New code	*	Code	Packing	UM
15×15	1609 068073		6190118	10/150	pc
18×18	1609 068074		6190129	10/120	pc
22×22	1609 068075		6190131	10/60	pc
28×28	1609 068076		6190140	10/40	pc
35×35	1609 068066		6190151	5/25	pc
42×42	1609 068077		6190162	4/16	pc
54×54	1609 068078		6190173	2/8	pc
76,1×76,1	1609 068070		6230092	2	pc
88,9×88,9	1609 068072		6230103	2	pc
108×108	1609 068061		6230114	2	pc



press tee

GROUP: G

Size	New code	*	Code	Packing	UM
12×12×12	1609 257045	**	6198907	10/80	pc
15×15×15	1609 257002		6191350	10/80	pc
18×18×18	1609 257046		6191372	10/40	pc
22×22×22	1609 257005		6191405	10/40	pc
28×28×28	1609 257047		6191449	5/25	pc
35×35×35	1609 257048		6191493	5/15	pc
42×42×42	1609 257049		6191537	4/8	pc
54×54×54	1609 257050		6191581	2/6	pc
76,1×76,1×76,1	1609 257010		620431.9	2	pc
88,9×88,9×88,9	1609 257011		620432.1	2	pc
108×108×108	1609 257000		620433.0	2	pc
139,7×139,7×139,7	1609 257001	**	6310004	1	pc
168,3×168,3×168,3	1609 257003	**	6310014	1	pc



* on request (delivery time up to 4 weeks)

** availability by individual arrangements

*** till stock ends

press reducing tee

GROUP: G



Size	New code	*	Code	Packing	UM
18×15×18	1609 260014		6191361	10/60	pc
22×15×22	1609 260046		6191383	10/50	pc
22×18×22	1609 260047		6191394	10/50	pc
28×15×28	1609 260048		6191416	5/30	pc
28×18×28	1609 260049		6191427	10/30	pc
28×22×28	1609 260050		6191438	5/30	pc
35×15×35	1609 260020		6191451	5/20	pc
35×18×35	1609 260021		6191460	5/20	pc
35×22×35	1609 260022		6191471	5/20	pc
35×28×35	1609 260051		6191482	5/20	pc
42×22×42	1609 260024		6191504	4/12	pc
42×28×42	1609 260052		6191515	4/12	pc
42×35×42	1609 260053		6191526	4/12	pc
54×22×54	1609 260054		6191548	2/8	pc
54×28×54	1609 260030		6191559	2/8	pc
54×35×54	1609 260055		6191561	2/8	pc
54×42×54	1609 260032		6191570	2/8	pc
76,1×22×76,1	1609 260035		620434.1	2	pc
76,1×28×76,1	1609 260036		620435.2	2	pc
76,1×35×76,1	1609 260037		620436.3	2	pc
76,1×42×76,1	1609 260038		620437.4	2	pc
76,1×54×76,1	1609 260039		620438.5	2	pc
88,9×22×88,9	1609 260040		620439.6	2	pc
88,9×28×88,9	1609 260041		620440.7	2	pc
88,9×35×88,9	1609 260042		620441.8	2	pc
88,9×42×88,9	1609 260043		620442.9	2	pc
88,9×54×88,9	1609 260044		620443.1	2	pc
88,9×76,1×88,9	1609 260045		620444.0	2	pc
108×22×108	1609 260000		620445.1	2	pc
108×28×108	1609 260001		620446.2	2	pc
108×35×108	1609 260002		620447.3	2	pc
108×42×108	1609 260003		620448.4	2	pc
108×54×108	1609 260004		620449.5	2	pc
108×76,1×108	1609 260005		620450.6	2	pc
108×88,9×108	1609 260006		620451.7	2	pc
139,7×76,1×139,7	1609 260008	**	6310007	1	pc
139,7×88,9×139,7	1609 260009	**	6310006	1	pc
139,7×108×139,7	1609 260007	**	6310005	1	pc
168,3×76,1×168,3	1609 260012	**	6310018	1	pc
168,3×88,9×168,3	1609 260013	**	6310017	1	pc
168,3×108×168,3	1609 260010	**	6310016	1	pc
168,3×139,7×168,3	1609 260011	**	6310015	1	pc

* on request (delivery time up to 4 weeks)

** availability by individual arrangements

*** till stock ends

press nipple reducer

GROUP: G

Size	New code	*	Code	Packing	UM
12×15	1609 220000	**	6198951	10/200	pc
18×15	1609 221003		6191121	10/200	pc
22×15	1609 221023		6191130	10/140	pc
22×18	1609 221024		6191141	10/120	pc
28×15	1609 221025		6191152	10/70	pc
28×18	1609 221007		6191163	10/100	pc
28×22	1609 221026		6191174	10/80	pc
35×15	1609 221027		6192221	5/50	pc
35×18	1609 221028		6191185	5/50	pc
35×22	1609 221029		6191196	5/50	pc
35×28	1609 221030		6191207	5/60	pc
42×15	1609 221031		6192230	5/30	pc
42×18	1609 221032		6192241	5/30	pc
42×22	1609 221033		6191218	4/24	pc
42×28	1609 221034		6191229	4/24	pc
42×35	1609 221035		6191231	4/24	pc
54×15	1609 221036		6192252	4/16	pc
54×18	1609 221037		6192263	4/16	pc
54×22	1609 221015		6191240	4/16	pc
54×28	1609 221016		6191251	4/16	pc
54×35	1609 221038		6191262	4/16	pc
54×42	1609 221039		6191273	4/16	pc
76,1×42	1609 221019		620421.1	2	pc
76,1×54	1609 221020		620422.0	4	pc
88,9×54	1609 221021		620423.1	2	pc
88,9×76,1	1609 221022		620424.2	2	pc
108×54	1609 221000		620425.3	2	pc
108×76,1	1609 221001		620426.4	2	pc
108×88,9	1609 221002		620427.5	2	pc
139,7×88,9	1609 221041	**	6310009	1	pc
139,7×108	1609 221040	**	6310008	1	pc
168,3×88,9	1609 221044	**	6310021	1	pc
168,3×108	1609 221042	**	6310020	1	pc
168,3×139,7	1609 221043	**	6310019	1	pc



press male elbow

GROUP: G

Size	New code	*	Code	Packing	UM
15×R½	1609 070000		6190877	10/80	pc
18×R½	1609 070002		6190888	10/80	pc
22×R¾	1609 070004		6190899	10/60	pc
28×R1	1609 070005		6190901	10/30	pc
35×R1¼	1609 070006		6190910	5/20	pc
42×R1½	1609 070009		6190921	2/16	pc
54×R2	1609 070010		6190932	2/8	pc



* on request (delivery time up to 4 weeks)

** availability by individual arrangements

*** till stock ends

press female elbow

GROUP: G

Size	New code	*	Code	Packing	UM
15×Rp½	1609 068000		6190822	10/80	pc
18×Rp½	1609 068001		6190833	10/90	pc
22×Rp½	1609 068003		6198456	10/50	pc
22×Rp¾	1609 068002		6190844	10/50	pc
28×Rp½	1609 068009		6198467	10/30	pc
28×Rp¾	1609 068005		6198478	10/30	pc
28×Rp1	1609 068008		6190855	10/30	pc
35×Rp½	1609 068011		6198489	5/10	pc
35×Rp¾	1609 068007		6198491	5/10	pc
35×Rp1	1609 068010		6198500	5/10	pc
35×Rp1¼	1609 068012		6190866	5/10	pc



nipple elbow with female thread

GROUP: G

Size	New code	*	Code	Packing	UM
15×Rp½ short	1609 068013		6192274	10/40	pc



press female tee

GROUP: G

Size	New code	*	Code	Packing	UM
15×Rp½×15	1609 257014		6191592	10/70	pc
18×Rp½×18	1609 257015		6191603	10/50	pc
18×Rp¾×18	1609 257016		6191614	10/50	pc
22×Rp½×22	1609 257017		6191625	10/40	pc
22×Rp¾×22	1609 257018		6191636	10/40	pc
28×Rp½×28	1609 257038		6191647	5/30	pc
28×Rp¾×28	1609 257039		6191658	10/30	pc
28×Rp1×28	1609 257019		6198599	10/30	pc
35×Rp½×35	1609 257040		6191669	5/20	pc
35×Rp¾×35	1609 257041		6191671	5/20	pc
35×Rp1×35	1609 257022		6198601	10/20	pc
42×Rp½×42	1609 257027		6191680	4/16	pc
42×Rp¾×42	1609 257042		6191691	4/12	pc
42×Rp1×42	1609 257026		6198610	4/16	pc
54×Rp½×54	1609 257031		6191702	2/8	pc
54×Rp¾×54	1609 257044		6191724	2/8	pc
54×Rp1×54	1609 257030		6198621	2/6	pc
54×Rp2×54	1609 257043		6191713	2/6	pc
76,1×Rp¾×76,1	1609 257035		620452.8	2	pc
76,1×Rp2×76,1	1609 257034		620455.0	2	pc
88,9×Rp¾×88,9	1609 257037		620453.9	2	pc
88,9×Rp2×88,9	1609 257036		620456.1	2	pc
108×Rp¾×108	1609 257013		620454.1	2	pc
108×Rp2×108	1609 257012		620457.2	2	pc



* on request (delivery time up to 4 weeks)

** availability by individual arrangements

*** till stock ends

press short wallplate elbow

GROUP: G

Size	New code	*	Code	Packing	UM
15×Rp½	1609 285009		6191801	10/90	pc
18×Rp½	1609 285002		6191812	10/90	pc
22×Rp¾	1609 285003		6191823	10/50	pc



press long wallplate elbow

GROUP: G

Size	New code	*	Code	Packing	UM
15×Rp½	1609 285004		6191999	20/40	pc
18×Rp½	1609 285007		6192001	20/40	pc
22×Rp¾	1609 285008		6192010	10/40	pc



press cup

GROUP: G

Size	New code	*	Code	Packing	UM
15	1609 250002		6191011	20/80	pc
18	1609 250004		6191020	20/300	pc
22	1609 250006		6191031	10/150	pc
28	1609 250020		6191042	10/130	pc
35	1609 250010		6191053	5/75	pc
42	1609 250012		6191064	4/48	pc
54	1609 250021		6191075	4/24	pc
76.1	1609 250016		620418.7	4	pc
88.9	1609 250018		620419.8	4	pc
108	1609 250000		620420.9	4	pc



crossover

GROUP: G

Size	New code	*	Code	Packing	UM
15×15	1609 178000		6191086	10/80	pc
18×18	1609 178001		6191097	10/50	pc
22×22	1609 178002		6191108	10/50	pc
28×28	1609 178003		6191119	10/20	pc



bend 15°

GROUP: G

Size	New code	*	Code	Packing	UM
28×28	1609 011002		6190008	10/40	pc
35×35	1609 011003		6190019	5/15	pc
42×42	1609 011004		6191834	2/20	pc
54×54	1609 011005		6191845	2/10	pc



bend 30°

GROUP: G

Size	New code	*	Code	Packing	UM
28×28	1609 011009		6190021	10/40	pc
35×35	1609 011008		6190030	4/12	pc
42×42	1609 011010		6191856	2/20	pc
54×54	1609 011011		6191867	2/8	pc



* on request (delivery time up to 4 weeks)

** availability by individual arrangements

*** till stock ends

bend 60°

GROUP: G

Size	New code	*	Code	Packing	UM
28×28	1609 011014		6190184	5/30	pc
35×35	1609 011015		6190195	4/12	pc
42×42	1609 011016		6191878	5/5	pc
54×54	1609 011017		6191889	2/6	pc



bend 90°

GROUP: G

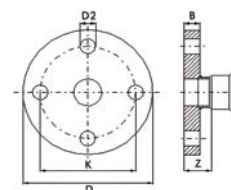
Size	New code	*	Code	Packing	UM
15×15	1609 011018		6190272	10/70	pc
18×18	1609 011019		6190283	10/50	pc
22×22	1609 011025		6190294	10/30	pc
28×28	1609 011026		6190305	5/20	pc
35×35	1609 011027		6190316	4/8	pc
42×42	1609 011028		6190327	2/4	pc
54×54	1609 011029		6190338	2/2	pc



press flange PN16

GROUP: G

Size	New code	*	Code	Packing	UM
15	1609 091004		6190756	1/15	pc
18	1609 091005		6190767	1/15	pc
22	1609 091006		6190778	1/12	pc
28	1609 091007		6190789	1/12	pc
35	1609 091001		6190791	1/6	pc
42	1609 091008		6190800	1/4	pc
54	1609 091009		6190811	1/2	pc
76.1	1609 091002		620412.1	4	pc
88.9	1609 091003		620413.2	2	pc
108	1609 091000		620414.3	2	pc
139.7	1609 091010	**	6310010	1	pc
168.3	1609 091011	**	6310022	1	pc



Code	Z	D	D2	K	B
1609091004	34	95	14	65	11
1609091005	40	95	14	65	11
1609091006	42.5	105	14	75	12
1609091007	48	115	14	85	14
1609091001	53	140	18	100	15
1609091008	61	150	18	110	16
1609091009	77	165	18	125	18
1609091002	71	185	18	145	18
1609091003	84	200	18	160	20
1609091000	90	220	18	180	20
1609091010	46	250	18	210	25
1609091011	53	285	22	240	26

* on request (delivery time up to 4 weeks)

** availability by individual arrangements

*** till stock ends

press flange connector

GROUP: G

Size	New code	*	Code	Packing	UM
15×1½	1609 090001		6191891	20/100	pc
15×1½	1609 090000		6191900	20/100	pc
18×1¼	1609 090011		6191911	20/100	pc
18×1½	1609 090010		6191922	20/100	pc
22×1¼	1609 090005		6191933	20/80	pc
22×1½	1609 090004		6191944	20/80	pc
28×1½	1609 090006		6191955	20/80	pc
35×2	1609 090007		6191966	10/30	pc
42×2¼	1609 090008		6191977	10/30	pc
54×2¾	1609 090012		6191988	5/20	pc



FPM Viton flat seal

GROUP: I

Size	New code	*	Code	Packing	UM
15/18	1509 237000		6118301	20/500	pc
22	1509 237001		6118310	20/500	pc
28	1509 237002		6118321	20/400	pc
35	1509 237003		6118332	20/400	pc
42	1509 237004		6118343	20/300	pc
54	1509 237005		6118354	20/300	pc



Caution: Not suitable for hot water installations.

LBP EPDM O-Ring

GROUP: I

Size	New code	*	Code	Packing	UM
12	1509 182021		622220.5	20/600	pc
15	1509 182022		6222216	20/600	pc
18	1509 182023		6222227	20/500	pc
22	1509 182024		6222238	20/500	pc
28	1509 182025		6222249	20/400	pc
35	1509 182026		6222251	20/400	pc
42	1509 182027		6222260	20/300	pc
54	1509 182028		6222271	20/300	pc



Caution: The LBP EPDM O-Rings can be used in System KAN-therm Steel and Inox.

LBP FPM Viton O-Ring

GROUP: I

Size	New code	*	Code	Packing	UM
15	1509 182030		6119401	20/600	pc
18	1509 182029		6119410	20/500	pc
22	1509 182031		6119421	20/500	pc
28	1509 182032		6119432	20/400	pc
35	1509 182033		6119443	20/400	pc
42	1509 182034		6119454	20/300	pc
54	1509 182035		6119465	20/300	pc



Caution: LBP O-Rings can be used in System KAN-therm Steel and Inox.
Caution: Not suitable for hot water installations.

* on request (delivery time up to 4 weeks)

** availability by individual arrangements

*** till stock ends

EPDM O-Ring

GROUP: I

Size	New code	*	Code	Packing	UM
76.1	1609 182023		620801.5	5/100	pc
88.9	1609 182024		620802.6	5/100	pc
108	1609 182025		620803.7	5/50	pc
N 139.7	1609 182016	**		1	pc
N 168.3	1609 182017	**		1	pc



FPM Viton O-Ring

GROUP: I

Size	New code	*	Code	Packing	UM
76.1	1609 182020		611937.7	5/100	pc
88.9	1609 182021		611938.8	5/100	pc
108	1609 182022		611939.9	5/50	pc
N 139.7	1609 182018	**		1	pc
N 168.3	1609 182019	**		1	pc



Caution: Not suitable for hot water installations.

LBP Viton O-Ring grey

GROUP: I

Size	New code	*	Code	Packing	UM
15	1509 182039		6119784	20/600	pc
18	1509 182040		6119795	20/500	pc
22	1509 182041		6119806	20/500	pc
28	1509 182042		6119817	20/400	pc
35	1509 182038		6119828	20/400	pc
42	1509 182043		6119839	20/300	pc
54	1509 182044		6119841	20/300	pc



Caution: use for water steam installation only.

Tools Inox

cutter for steel pipes

GROUP: K

Size	New code	*	Code	Packing	UM
12-54 mm.	1948 267025		113000	1	pc
35-108 mm.	1948 267027		113100	1	pc



wheel for cutter for steel pipes - service element

GROUP: K

New code	*	Code	Packing	UM
1941 267037		341614	1	pc



electric cutter

GROUP: K

Size	New code	*	Code	Packing	UM
22-108 mm.	1948 267021		845000	1	pc

Caution: Electric cutter is sold without the cutting wheel.



* on request (delivery time up to 4 weeks)

** availability by individual arrangements

*** till stock ends

wheel for electric cutter for steel pipes - service element

GROUP: K

New code	*	Code	Packing	UM
1941 267041		845050	1	pc



electric cutter

GROUP: K

Size	New code	*	Code	Packing	UM
108-169 mm.	1948 267034		845004	1	pc

The set contains the pipe cutting machine and cutting wheel.



support for the pipe for pipe cutting machine

GROUP: K

New code	*	Code	Packing	UM
1948 267029		845220	1	pc



stripping tool - drill set

GROUP: K

Size	New code	*	Code	Packing	UM
12-54 mm.	1948 267015		113835	1	pc



set of additional tools

GROUP: K

New code	*	Code	Packing	UM
1948267023		KPSN	1	set

It consists of the following items:

- 1948 267025 wheel cutter for steel pipes 12-54 mm
- 1948 267015 beveller 12-54 mm
- Case



ACO102 press tool with "M" type jaws

GROUP: K

Size	New code	*	Code	Packing	UM
15-28	1948 055007		44033-50 KPL	1	set

It consists of the following items:

- 1948 267161 Battery-powered press tool - 1 pc
- 1948 267093 M15 jaws for the press tool - 1 pc
- 1948 267095 M18 jaws for the press tool - 1 pc
- 1942 121002 M22 jaws for the press tool - 1 pc
- 1948 267097 M28 jaws for the press tool - 1 pc
- 1938 267047 Battery charger - 1 pc
- 1938 267002 Battery 1.5 Ah - 2 pcs
- Case



* on request (delivery time up to 4 weeks)

** availability by individual arrangements

*** till stock ends

Power Press ACC press tool with automatic clutch

GROUP: K

New code	*	Code	Packing	UM
1936 267219		ZAPR04	1	pc

The press tool is sold in the case.



electric press tool 230V - Power Press E Basic Pack

GROUP: K

Size	New code	*	Code	Packing	UM
12-54 mm.	1936 267160		ZAPR01	1	pc

The press tool is sold in the case.



rechargeable press tool - Aku Press

GROUP: K

Size	New code	*	Code	Packing	UM
12-54 mm.	1936 267152		ZAPRAK	1	pc

Caution:

The press tool is sold complete with battery, charger and the case.
The set doesn't include jaws and other tools



"M" profile press jaws for Power and Aku Press

GROUP: K

Size	New code	*	Code	Packing	UM
12	1948 267046		570100	1	pc
15	1948 267048		570110	1	pc
18	1948 267052		570120	1	pc
22	1948 267056		570130	1	pc
28	1948 267061		570140	1	pc
35	1948 267065		570150	1	pc
42	1948 267067		570160	1	pc
54	1948 267069		570170	1	pc



* on request (delivery time up to 4 weeks)

** availability by individual arrangements

*** till stock ends

"M" type set of jaws

GROUP: K

Size	New code	*	Code	Packing	UM
42-54	1948 267130		KPSD	1	pc

It consists of the following items:

- 1948 267067 jaw "M" for diameter 42 mm
- 1948 267069 jaw "M" for diameter 54 mm
- case



Set of "M" type jaws with electrical press tool

GROUP: K

Size	New code	*	Code	Packing	UM
15-35	1948 267033		KPSM	1	pc

It consists of the following items:

- 1948 267048 jaw "M" for diameter 15 mm
- 1948 267052 jaw "M" for diameter 18 mm
- 1948 267056 jaw "M" for diameter 22 mm
- 1948 267061 jaw "M" for diameter 28 mm
- 1948 267065 jaw "M" for diameter 35 mm
- 1936 267160 electric press tool
- case



rechargeable press tool UAP100

GROUP: K

Size	New code	*	Code	Packing	UM
76.1-108 mm.	1948 267159		UAP100	1	pc



press jaws for UAP100

GROUP: K

Size	New code	*	Code	Packing	UM
76.1	1948 267080		BP761M	1	pc
88.9	1948 267082		BP889M	1	pc
108	1948 267074		BP108M	1	pc



set of tools for installing pipes Ø76,1-108

GROUP: K

New code	*	Code	Packing	UM
1948 267031		KPSDU	1	set

It consists of the following items:

- 1948 267151 Battery-powered press tool UAP100
- 1948 267080 jaw for the UAP100 Ø76,1 press tool
- 1948 267082 jaw for the UAP100 Ø88,9 press tool
- 1948 267074 jaw for the UAP100 Ø108 press tool



x3



ECO 301 press machine

GROUP: K

Size	New code	*	Code	Packing	UM
12-66.7	1948 267163		620570.5	1	pc



* on request (delivery time up to 4 weeks)

** availability by individual arrangements

*** till stock ends

ECO 301 press jaw

GROUP: K

Size	New code	*	Code	Packing	UM
12	1948 267084		620572.7	1	pc
15	1948 267085		620573.8	1	pc
18	1948 267087		620574.9	1	pc
22	1948 267164		620575.1	1	pc
28	1948 267165		620576.0	1	pc



ECO 301 HP Snap On collar

GROUP: K

Size	New code	*	Code	Packing	UM
35	1948 267124		634106.0	1	pc
42	1948 267126		634107.1	1	pc
54	1948 267128		634108.2	1	pc



Caution:

Collars 35 – 54 mm needs additional adapter ZB 303.

adapter ZB 303 for ECO 301 press machine

GROUP: K

Size	New code	*	Code	Packing	UM
35-42-54	1948 267166		634111.5	1	pc



ACO 401 press machine (battery powered)

GROUP: K

Size	New code	*	Code	Packing	UM
76.1-168	1948 267151		634008.1	1	pc



HP collar for ACO 401 press machine

GROUP: K

Size	New code	*	Code	Packing	UM
76.1	1948 267100		634009.2	1	pc
88.9	1948 267102		634010.3	1	pc
108	1948 267098		634011.4	1	pc
139.7	1948 267071		BF139	1	pc
168.3	1948 267072		BF168	1	pc



* on request (delivery time up to 4 weeks)

** availability by individual arrangements

*** till stock ends